

Worm Drive Performance Data		
Rated Output Speed	<1.5 rpm	
Rated Output Torque	3.5 kN.m	2583 lbf.ft
Tilting Moment Torque (Max.)	14.7 kN.m	10.8 × 10 <sup>3</sup> lbf.ft
Holding Torque	20.6 kN.m	15.2 × 10 <sup>3</sup> lbf.ft
Axial Load (Max.)	227 kN	51 × 10 <sup>3</sup> lbf
Radial Load (Max.)	92.7 kN	20.8 × 10 <sup>3</sup> lbf
Ratio of Worm Gear	47:1	
Backlash	≤ 0.15 °	

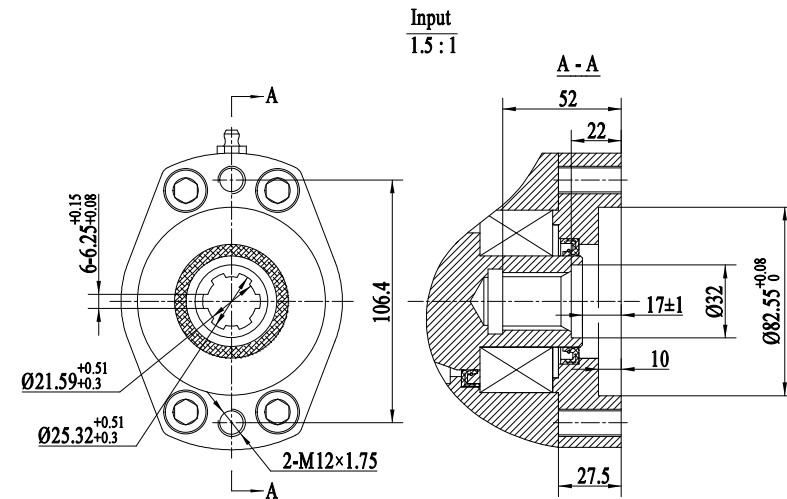
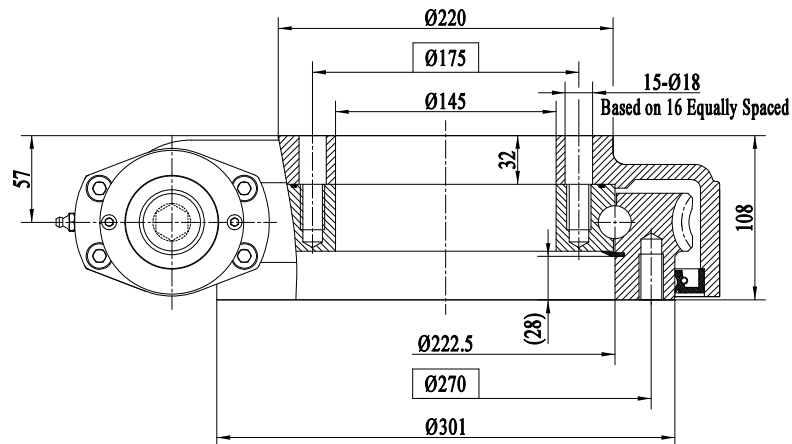
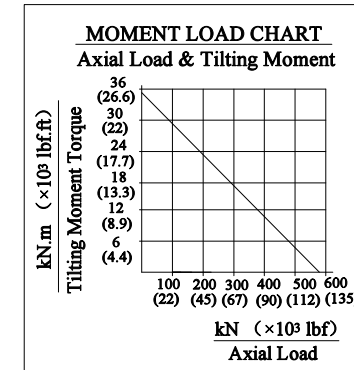
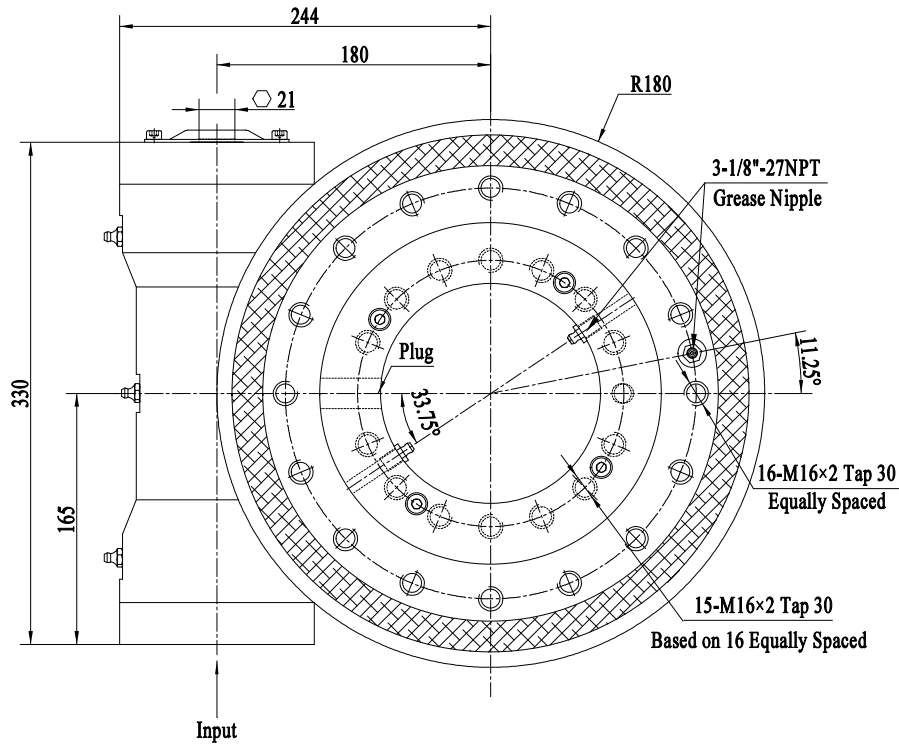


SLEWING DRIVE

回转式减速器

SWA7-47M-BH-R

REV  
A



Worm Drive Performance Data		
Rated Output Speed	<1.5 rpm	
Rated Output Torque	8 kN.m	5904 lbf.ft
Tilting Moment Torque (Max.)	35.6 kN.m	26.3 × 10 <sup>3</sup> lbf.ft
Holding Torque	39.8 kN.m	29.37 × 10 <sup>3</sup> lbf.ft
Axial Load (Max.)	580 kN	130.3 × 10 <sup>3</sup> lbf
Radial Load (Max.)	220 kN	49.4 × 10 <sup>3</sup> lbf
Ratio of Worm Gear	62:1	
Backlash	≤ 0.15 °	

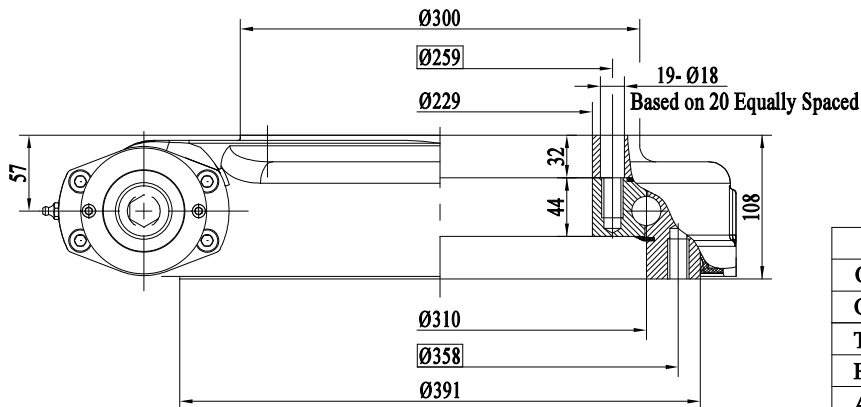
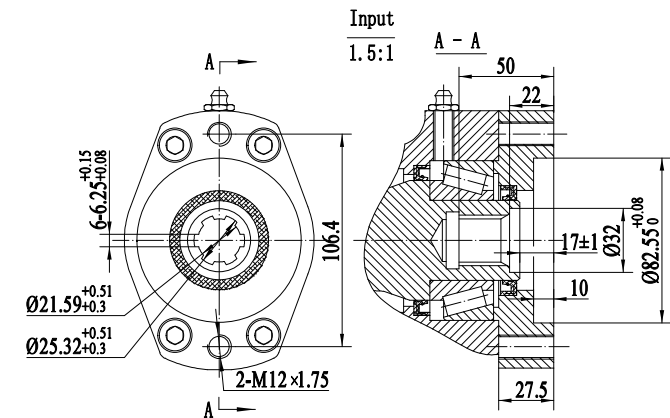
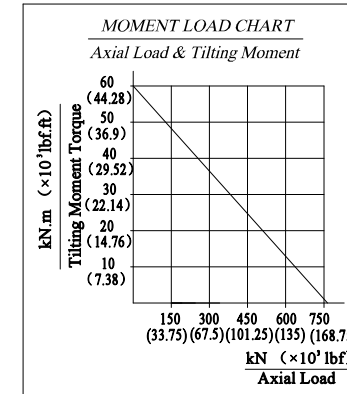
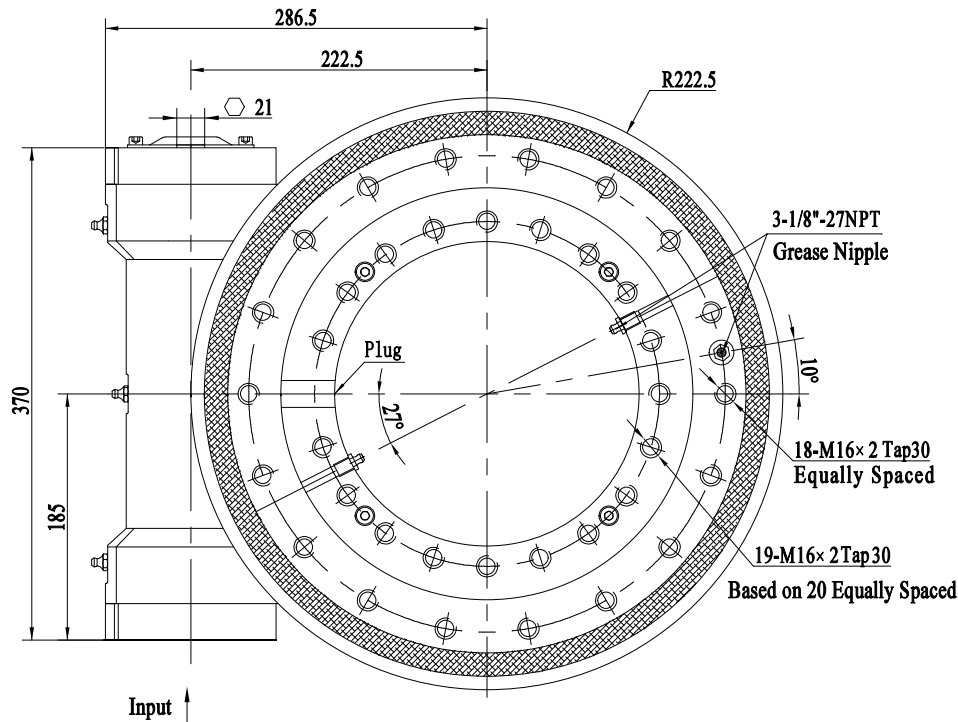


**SLEWING DRIVE**

回转式减速器

**SWA9-62M-BH-R**

REV  
A



Worm Drive Performance Data		
Output Speed	< 1.5 rpm	
Output Torque (Max.)	9.5kN.m	7011lbf.ft
Tilting Moment Torque (Max.)	57 kN.m	42.1×10 <sup>3</sup> lbf.ft
Holding Torque	43 kN.m	32×10 <sup>3</sup> lbf.ft
Axial Load (Max.)	760 kN	171.1×10 <sup>3</sup> lbf
Radial Load (Max.)	280 kN	62.9×10 <sup>3</sup> lbf
Ratio of Worm Gear	79:1	
Backlash	≤ 0.15 °	

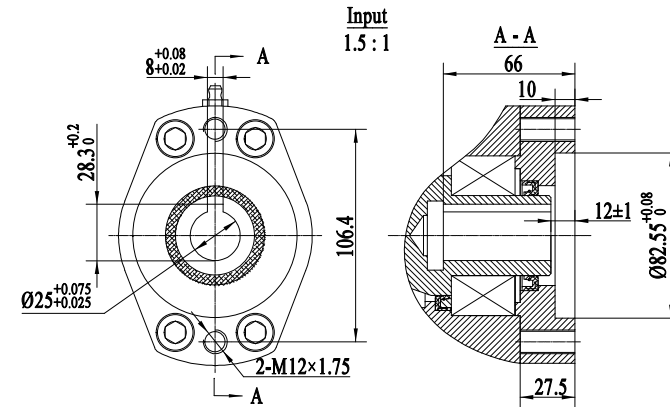
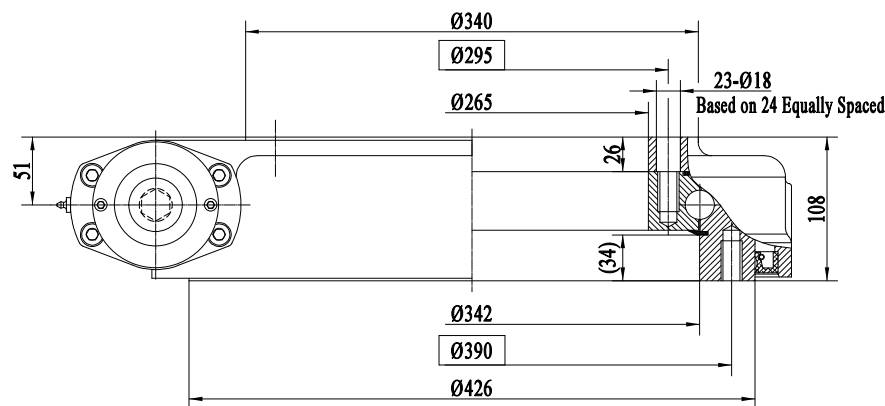
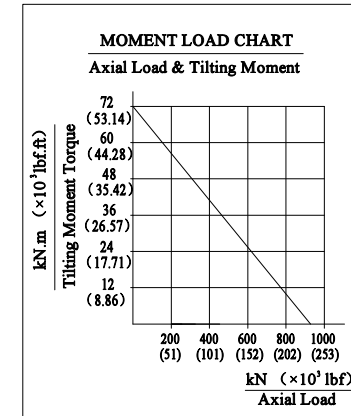
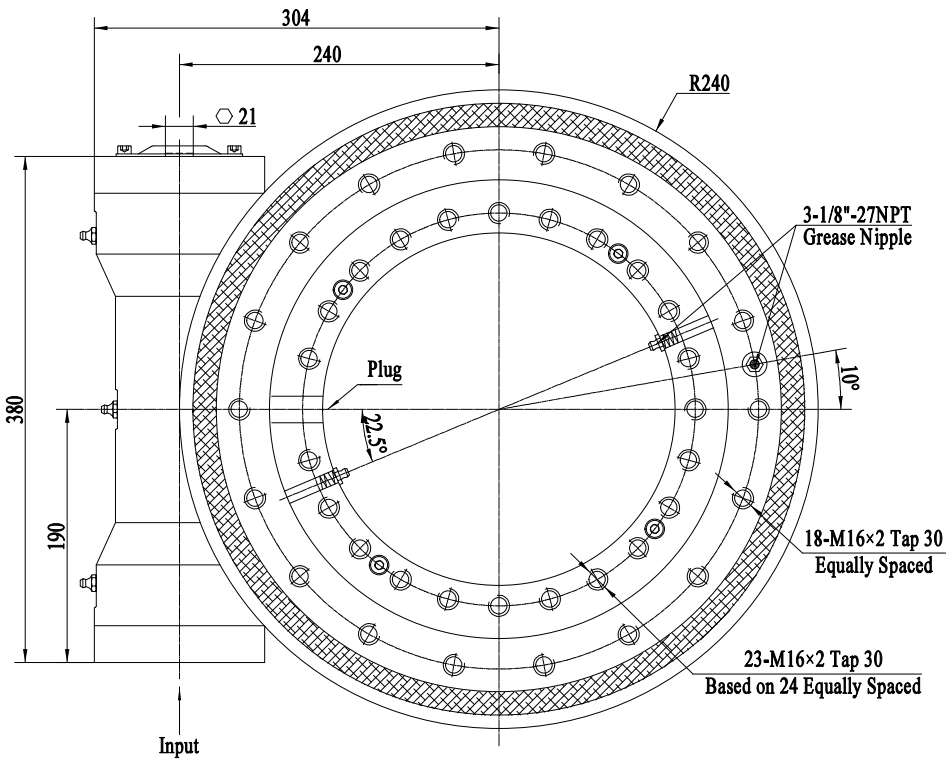


SLEWING DRIVE

回转式减速器

SWA12-79M-BH-R

REV  
A



Worm Drive Performance Data		
Rated Output Speed	<1.5 rpm	
Rated Output Torque	10.8 kN.m	7970 lbf.ft
Tilting Moment Torque (Max.)	71.2 kN.m	52.5 × 10 <sup>3</sup> lbf.ft
Holding Torque	49.5 kN.m	36.5 × 10 <sup>3</sup> lbf.ft
Axial Load (Max.)	960 kN	215.8 × 10 <sup>3</sup> lbf
Radial Load (Max.)	360 kN	80.9 × 10 <sup>3</sup> lbf
Ratio of Worm Gear	86:1	
Backlash	≤ 0.13 °	

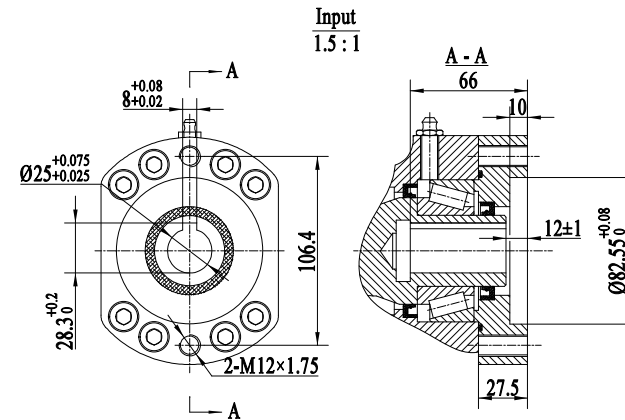
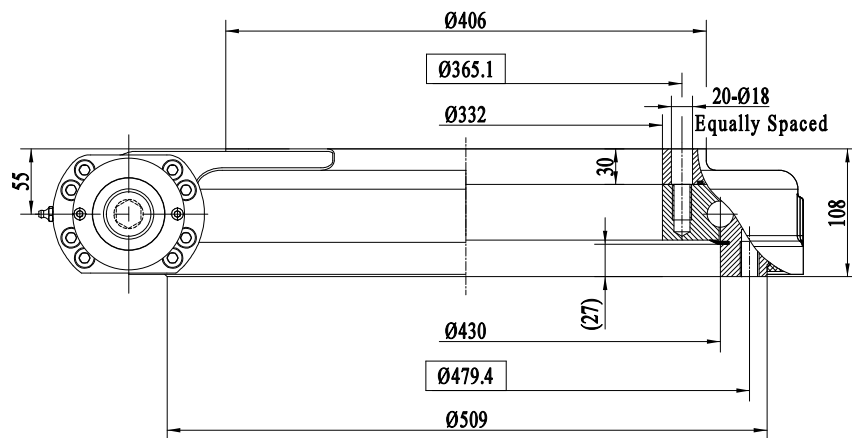
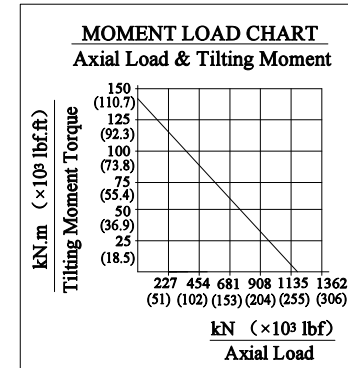
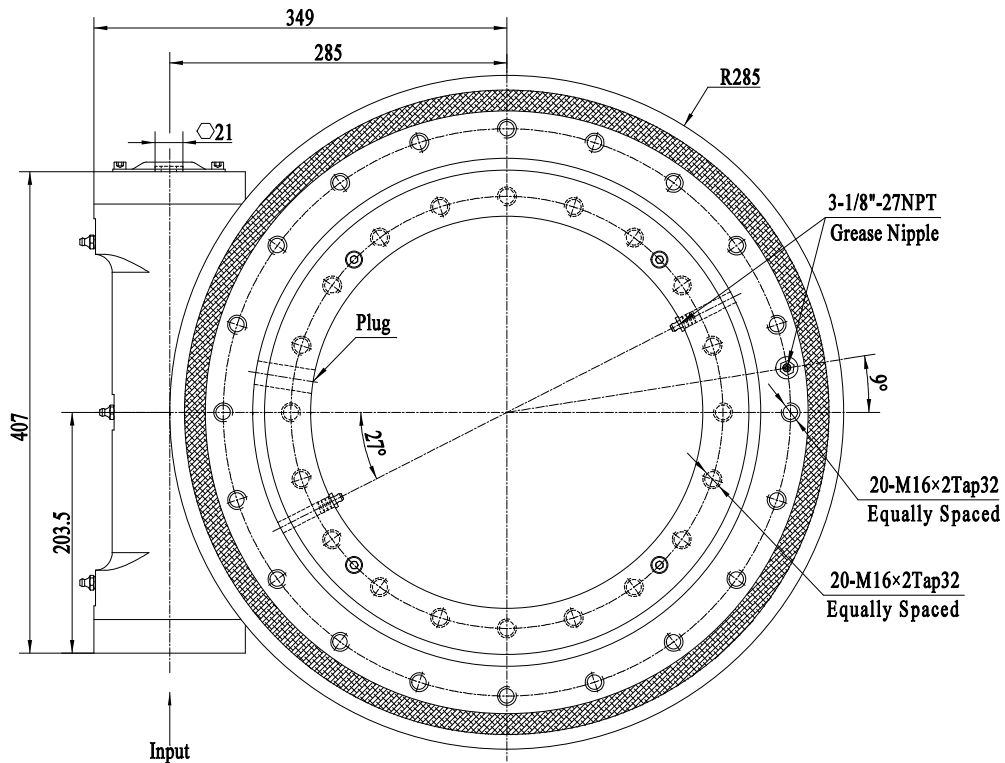


SLEWING DRIVE

回转式减速器

SWA14-86M-25H-R

REV  
A



Worm Drive Performance Data		
Rated Output Speed	<1.5 rpm	
Rated Output Torque	12.96 kN.m	9564 lbf.ft
Tilting Moment Torque (Max.)	142.4 kN.m	105.1 × 10 <sup>3</sup> lbf.ft
Holding Torque	74 kN.m	54.6 × 10 <sup>3</sup> lbf.ft
Axial Load (Max.)	1166 kN	262 × 10 <sup>3</sup> lbf
Radial Load (Max.)	435 kN	97.8 × 10 <sup>3</sup> lbf
Ratio of Worm Gear	104:1	
Backlash	≤ 0.1 °	

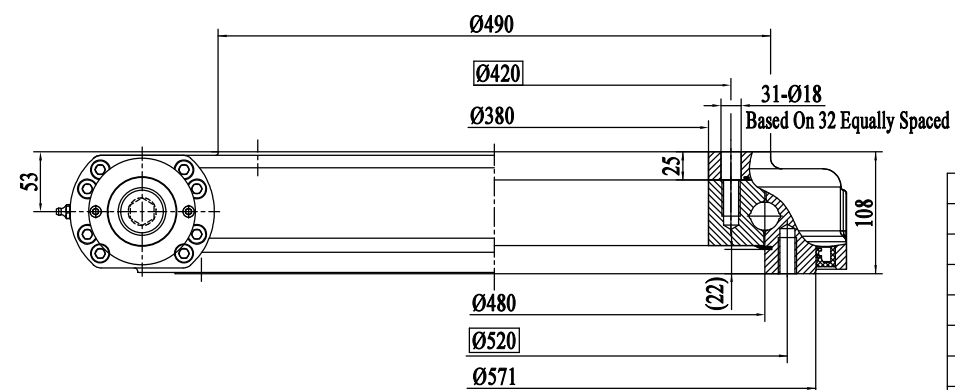
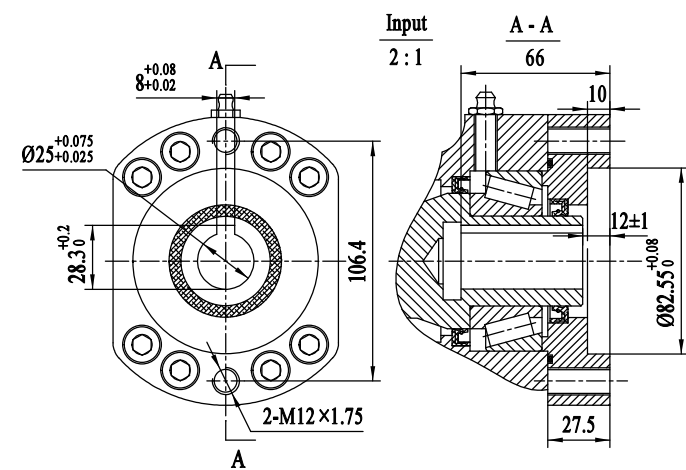
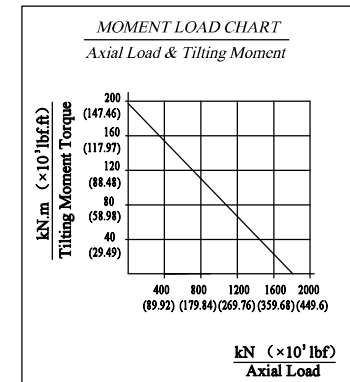
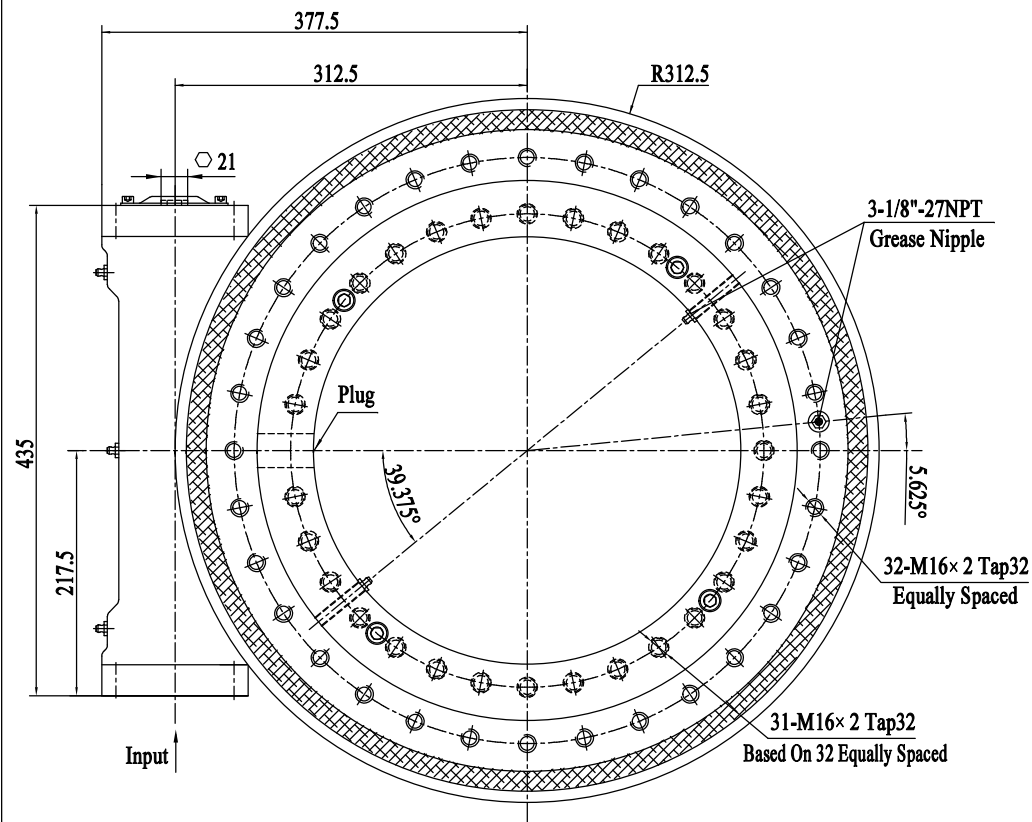


SLEWING DRIVE

回转式减速器

SWA17-104M-25H-R

REV  
A



Worm Drive Performance Data		
Output Speed	< 1.5rpm	
Output Torque(Max.)	18.5kN.m	13640 lbf.ft
Tilting Moment Torque (Max.)	196 kN.m	144.5×10 <sup>3</sup> lbf.ft
Holding Torque	80.1 kN.m	59.1×10 <sup>3</sup> lbf.ft
Axial Load (Max.)	1800 kN	404.64×10 <sup>3</sup> lbf
Radial Load (Max.)	675 kN	151.74×10 <sup>3</sup> lbf
Ratio of Worm Gear	94:1	
Backlash	≤ 0.1 °	

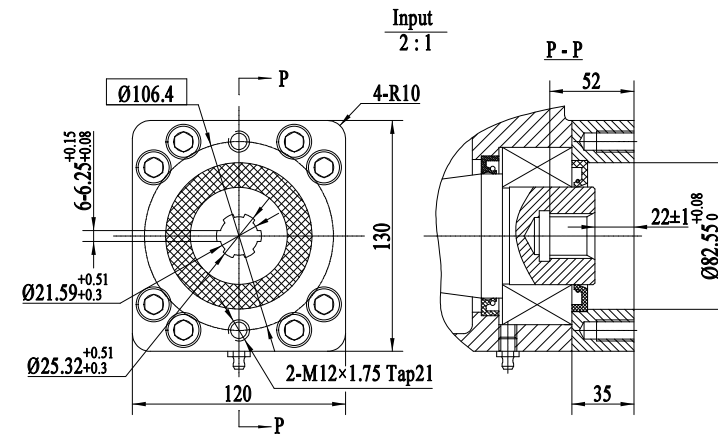
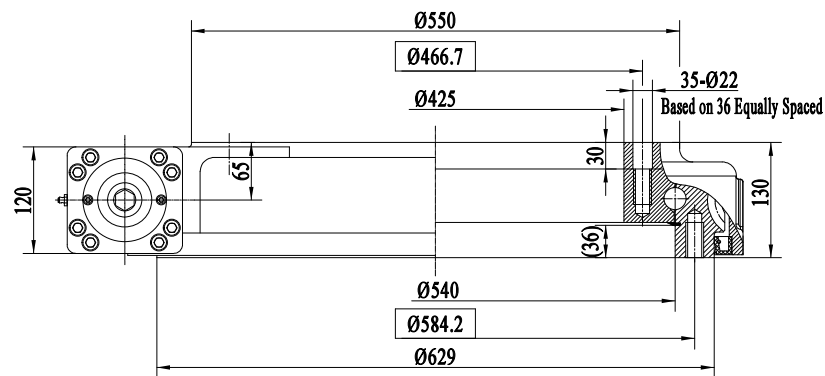
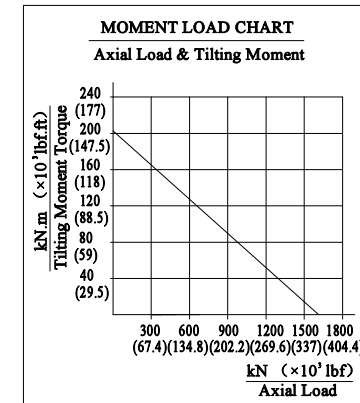
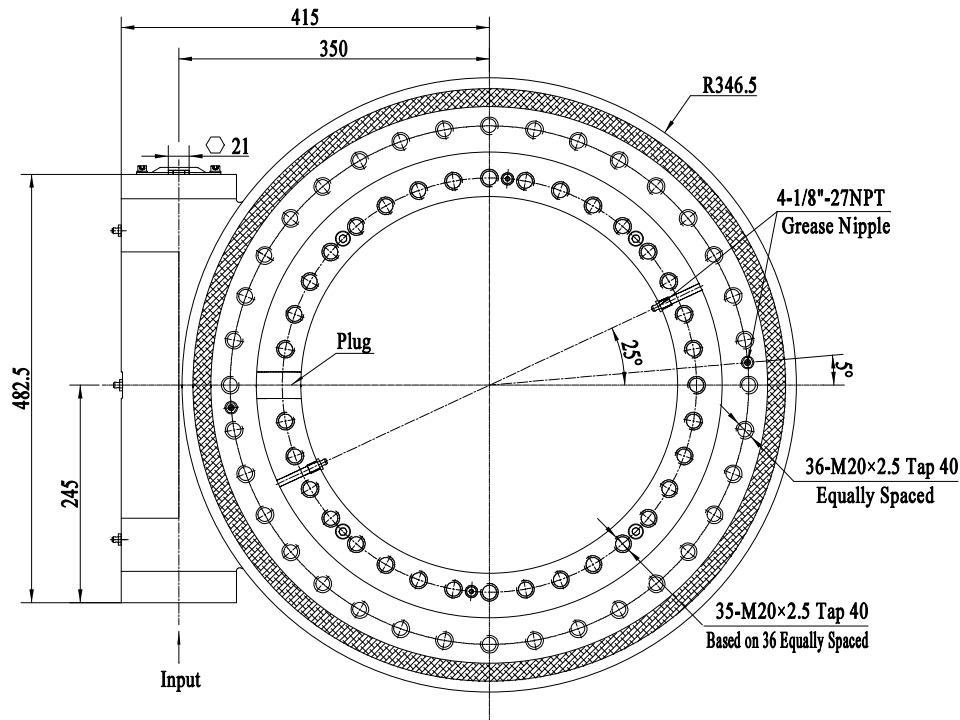
**SWBTEC**

**SLEWING DRIVE**

回转式减速器

**SWA19-94M-25H-R**

REV	A
-----	---



Worm Drive Performance Data		
Rated Output Speed	< 1.5 rpm	
Output Torque (Max.)	28.7 kN.m	21180 lbf.ft
Tilting Moment Torque (Max.)	203 kN.m	150×10 <sup>3</sup> lbf.ft
Holding Torque	107 kN.m	78.9×10 <sup>3</sup> lbf.ft
Axial Load (Max.)	1600 kN	359.7×10 <sup>3</sup> lbf
Radial Load (Max.)	650 kN	146×10 <sup>3</sup> lbf
Ratio of Worm Gear	90:1	
Backlash	≤ 0.1 °	

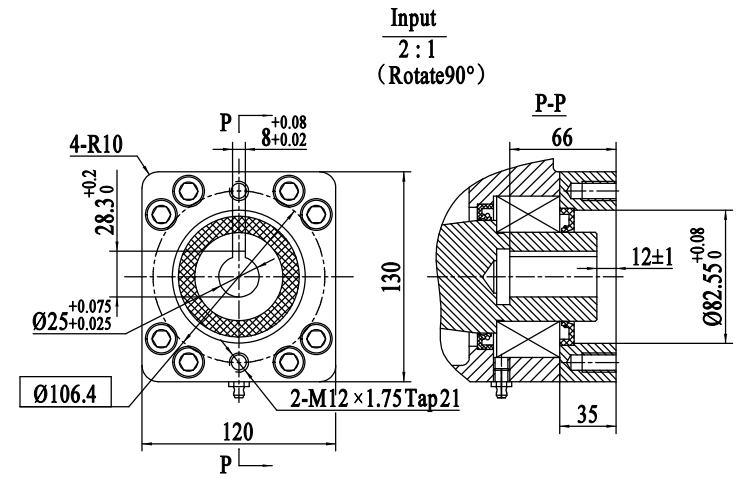
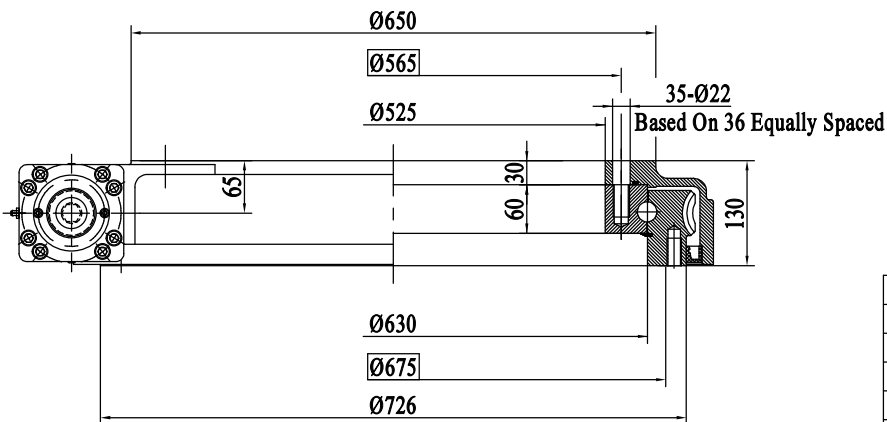
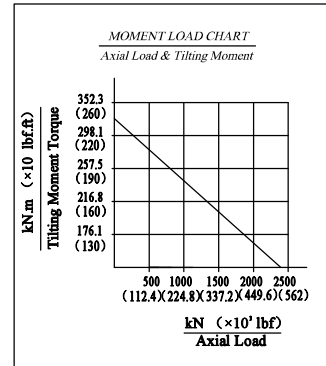
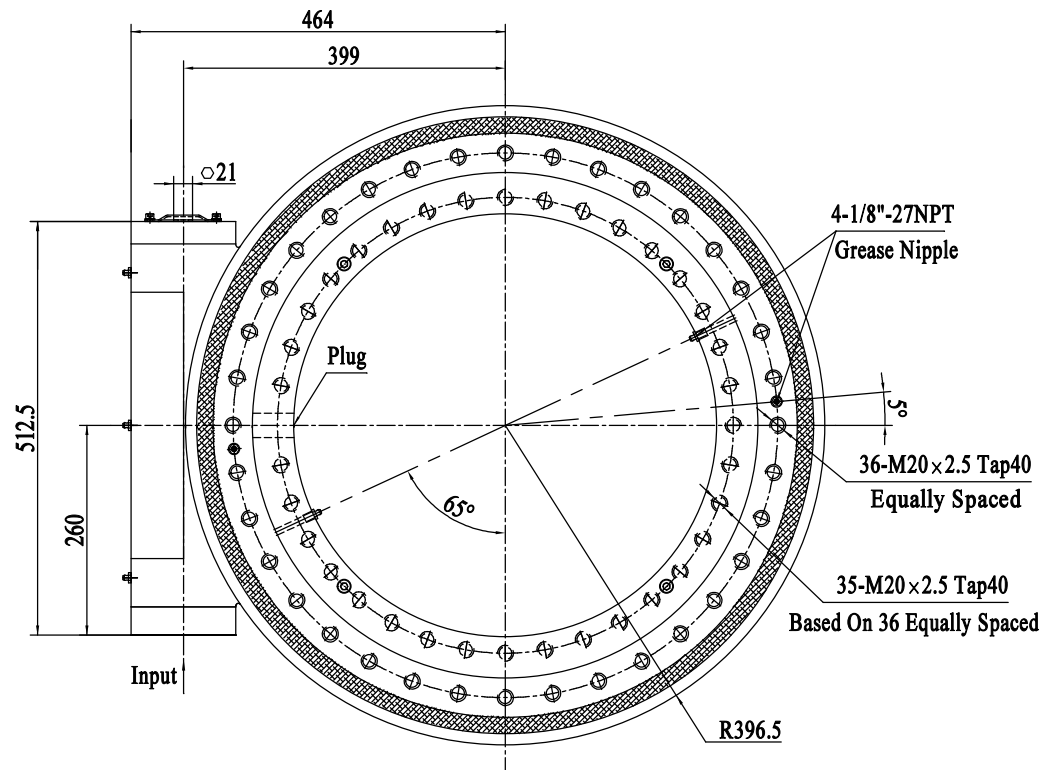
**SWBTEC**

**SLEWING DRIVE**

回转式减速器

**SWA21-90M-BH-R**

REV	A
-----	---



Slewing Drive Performance Data		
Output Speed	< 1.5rpm	
Output Torque(Max.)	34.2 kN.m	25240 lbf.ft
Tilting Moment Torque (Max.)	310 kN.m	229×10 <sup>3</sup> lbf.ft
Holding Torque	158.3 kN.m	117×10 <sup>3</sup> lbf.ft
Axial Load (Max.)	2360 kN	531×10 <sup>3</sup> lbf
Radial Load (Max.)	945 kN	212×10 <sup>3</sup> lbf
Ratio of Worm Gear	104:1	
Tracking Precision	≤ 0.1 °	

  
**SWBTEC**  
**SLEWING DRIVE**  
 回转式减速器  
**SWA25-104M-25H-R**

	REV
	A